

Cromwell

200 Mary Street, Brisbane

CLIENT	Cromwell
PROJECT SIZE	2,000sqm
PROJECT LENGTH	17 weeks
YEAR COMPLETED	2015

PROJECT FEATURES

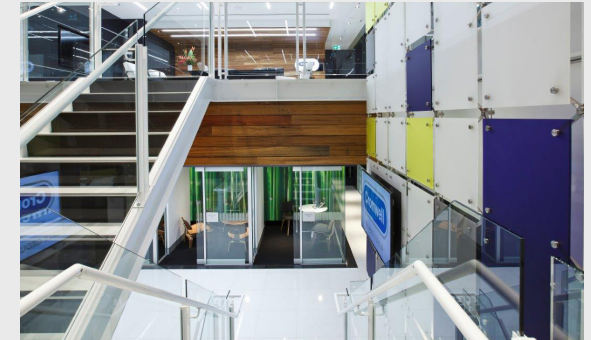
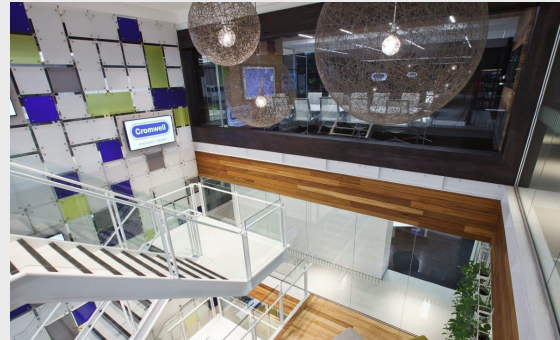
Stripout of the existing tenancy and full fitout of Levels 17, 18 & 19

Design & construct project

Integration of all essential services

Fully automated audio visual package, security systems

Interconnecting staircase spanning the three floors



FDC (QLD) has recently completed the fitout of Cromwell's Head Office, Levels 17, 18 & 19, 200 Mary Street, Brisbane.

Cromwell buy and manage commercial properties throughout Australia and invite investors to participate in the wealth they generate. One of Australia's leading property investment and funds management groups, Cromwell are in the S&P/ASX 200, have a property portfolio valued at \$2.3 billion, and a thriving funds management business with \$1.2 billion of assets under management.

The 2,000sqm project will be executed over 17 weeks over 2 stages and involves the stripout of the existing tenancy and full fitout of Levels 17, 18 & 19. The design & construct project features the integration of all essential services as well as a fully automated audio visual package, security systems and interconnecting staircase spanning the three floors.

FDC worked with with Nettleton Tribe, Interior Engineering and Bornhurst & Ward to deliver the project.

